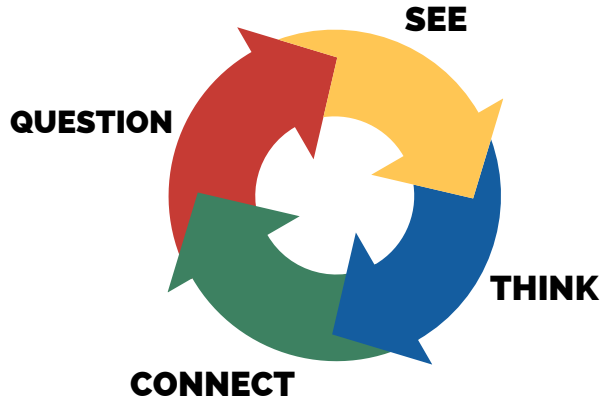


Let's look & learn

Can you find these objects?



See

- What do you see? What do you recognize
- Describe this object using all your senses

Think

- What do you think is going on here?
- What do you see that makes you say that?
- Notice: Material, Process, Symbols, Context, and Meanings.

Connect

- Can you find one connection with another work in the same space?
- How does it connect to you and your world?

Question

- What new questions came up?



LET'S

GO



UMMA

TOUR

Once you find these objects, check them off and return to the front desk for a freebie!

APSE

LEVEL 1

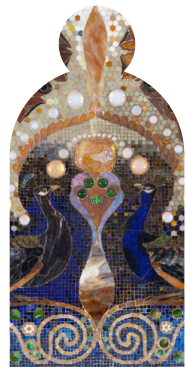


In *bodies and souls*, Mattai's art becomes a patchwork of memory and heritage. Against a broken frame, a quilt of saris and salwar kameezes gently cascade. Each item belonged to a loved one; material becomes not only a transport of culture but a tangible connection to family, friends, and community.



What objects remind you of family?

Suchitra Mattai, *bodies and souls (fabric element)*, 2021, fabric, metallic thread, sequins | wood frame. Museum Purchase made possible by the Director's Acquisition Committee, 2022



BALCONY

LEVEL 2



This mosaic uses one of Tiffany's signature motifs—the peacock—and was the centerpiece of the foyer to an opulent New York house; it was placed over the large fireplace that dominated the room.



Choose something special in your home. What makes it important to you?

Louis Comfort Tiffany, Peacock Mosaic, from the entrance hall of the Henry O. Havemeyer house, New York, 1890 – 1891, favrile glass, pottery, and plaster. Museum Purchase made possible by the Director's Acquisition Committee, 2022



AFRICAN GALLERY

LEVEL 2

Frederick Ebenezer Okai, an artist based in Ghana, builds a new kiln around every sculpture, and needs to be dismantled brick-by-brick after firing. It is common for the bricks to fall inwards and destroy the newly fired pot, in which case Okai has to start all over again.



Okai asks his friends to create these large works with him. Who would you ask to help you build a large artwork?

Frederick Ebenezer Okai, *When the Gods Speak, Heaven Listens*, 2022, clay, duvet padding, stringed lights, nylon rope, metal wire, polyurethane glue. Museum Purchase made possible by the Director's Acquisition Committee, 2023



LEVEL M

Fire Engine Red is one of a series of works that Rockburne produced between 1966 and 1968 by applying an industrial, wrinkle-finish paint to sheets of metal, in this case aluminum. Rockburne applied the bright red paint directly from the can and dried it using a heat lamp.



If you were an ant, what would the surface feel like?

Dorothea Rockburne, *Fire Engine Red*, 1967, wrinkle finish paint (oil) | aluminum. Gift of the Lannan Foundation in Honor of the Pelham Family

CHINESE GALLERY

LEVEL M



Icon consists of 19 small circular plates with dragon and flower-scroll patterns that are typical to many traditional blue and white wares. Bruce Lee, who remains an iconic figure in American popular culture, stares at you from the center.



Who is an icon in your life?

Steven Young Lee, *Icon*, 2019, porcelain, cobalt. Museum purchase made possible by the William C. Weese, M.D. Endowment for Ceramic Arts



VERTICAL GALLERY

LEVEL 1



Throughout these paintings, Carlson memorializes the events of October 15, 1900, when the Cheboiganing Band's village was burned. *Sky in the Morning Hours of "Binaakwiiwi-giizis 15, 1900"* includes a representation of the constellations in the sky on that day.



What stands out to you about this exhibition?

Andrea Carlson, *Sky in the Morning Hours of "Binaakwiiwi-giizis 15, 1900"*, 2022, gouache on paper. Courtesy of the artist © Andrea Carlson